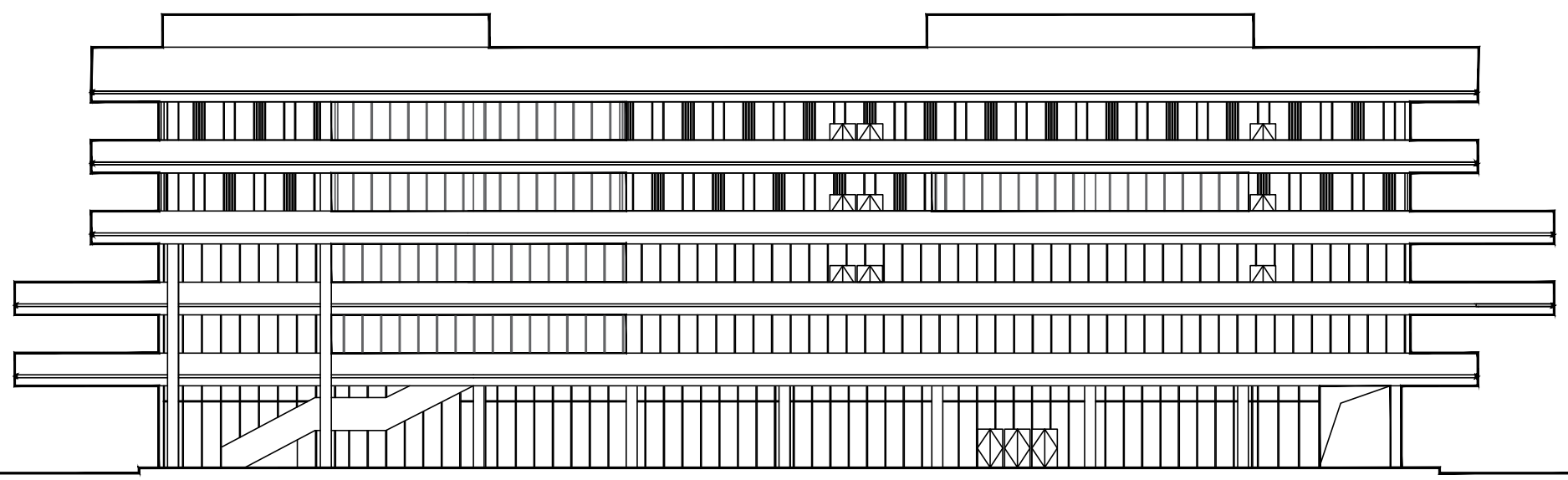


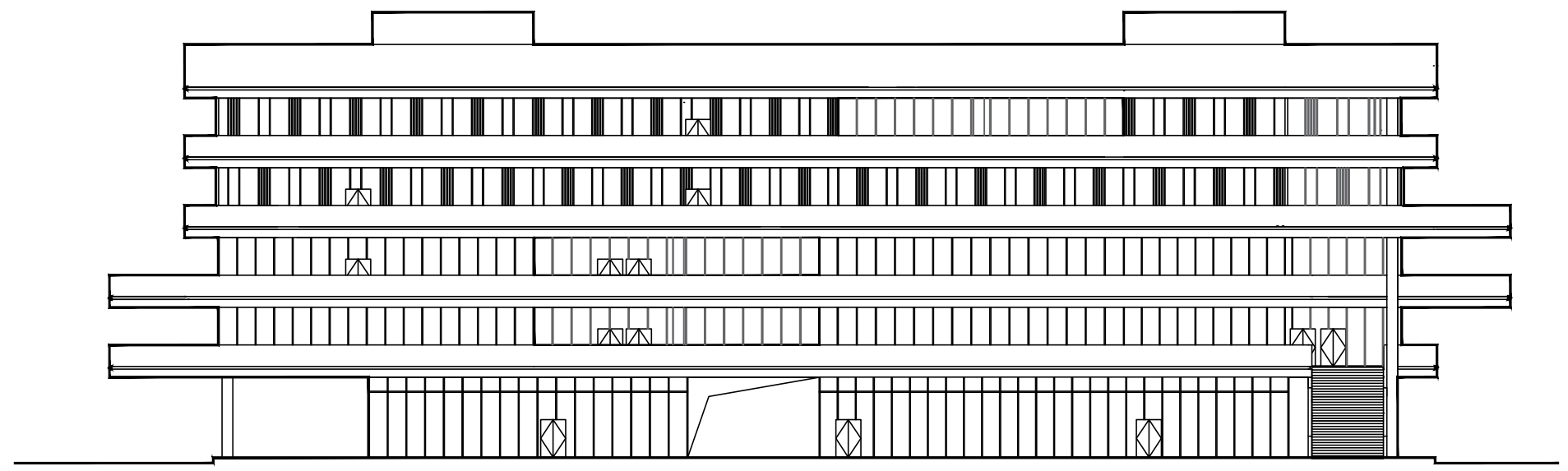
女儿墙 23.10
屋面层 20.70
5F 16.80
4F 12.90
3F 9.00
2F 5.10
1F ±0.00
-0.30



23.10 女儿墙
20.70 屋面层
16.80 5F
12.90 4F
9.00 3F
5.10 2F
±0.00 1F
-0.30

南立面图 1:350

女儿墙 23.10
屋面层 20.70
5F 16.80
4F 12.90
3F 9.00
2F 5.10
1F ±0.00
-0.30



23.10 女儿墙
20.70 屋面层
16.80 5F
12.90 4F
9.00 3F
5.10 2F
±0.00 1F
-0.30

北立面图 1:350